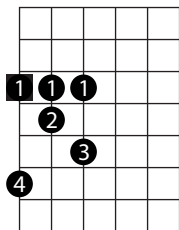


Moll7b5 Pentatonik - Octaves.

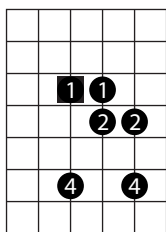
Für Spielanleitung auf das Video gehen! © 2015 by Bernd Kiltz.

Octave 1E



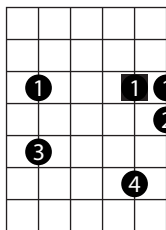
Musical notation for Octave 1E. Treble clef, key signature of one flat (Bb). The scale is played in two directions: ascending and descending. The guitar tablature below shows the fret numbers for each string: 3-6, 3-4, 3-5, 5-3, 4-3, 6-3.

Octave 1D



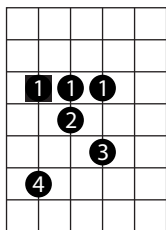
Musical notation for Octave 1D. Treble clef, key signature of one flat (Bb). The scale is played in two directions: ascending and descending. The guitar tablature below shows the fret numbers for each string: 5-8, 5-6, 6-8, 8-6, 6-5, 8-5.

Octave 1B



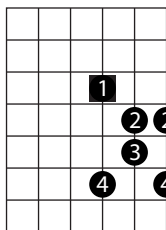
Musical notation for Octave 1B. Treble clef, key signature of one flat (Bb). The scale is played in two directions: ascending and descending. The guitar tablature below shows the fret numbers for each string: 8-11, 8-9, 9-8, 11-8, 8-10, 10-8.

Octave 1A



Musical notation for Octave 1A. Treble clef, key signature of one flat (Bb). The scale is played in two directions: ascending and descending. The guitar tablature below shows the fret numbers for each string: 10-13, 10-11, 10-12, 12-10, 11-10, 13-10.

Octave 1G



Musical notation for Octave 1G. Treble clef, key signature of one flat (Bb). The scale is played in two directions: ascending and descending. The guitar tablature below shows the fret numbers for each string: 12-15, 13-14, 13-15, 15-13, 14-13, 15-12.